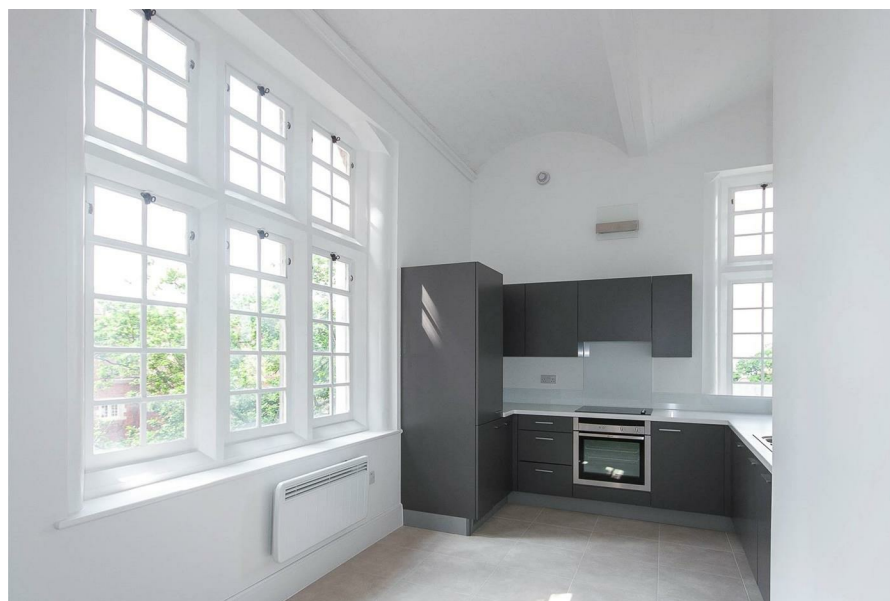


TOTAL APPROX. FLOOR AREA 635 SQ.FT. (59.0 SQ.M.)  
THIS PLAN IS FOR ROOM IDENTIFICATION ONLY, AND ITS ACCURACY IS NOT GUARANTEED. [www.epcsinessex.co.uk](http://www.epcsinessex.co.uk)  
Made with Metropix ©2018



## 14 London Court Warley, The Galleries, Brentwood, CM14 5FW

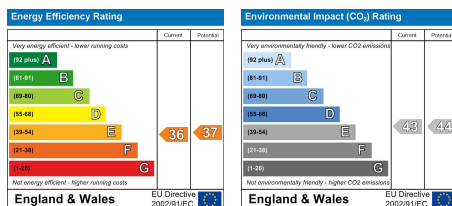
Guide Price £350,000 to £375,000

A simply stunning one-bedroom apartment, forming part of the award-winning Galleries Development with its manicured and well-tended gardens, located within a short walk of Brentwood's Mainline Railway Station, vibrant High Street and country parks.

The communal security entrance door, accessed via fob, takes you to the apartment via a staircase. On entering the property, the entrance hall provides a storage cupboard with utility space and access to all rooms. The living room offers a view over the gardens and has an ornate curved feature ceiling whilst the fully fitted modern kitchen, with coloured gloss fronted units, has a dining area and overall length of 17'6. A principal bathroom has a modern and well-fitted suite.

The apartment is offered with no onward chain and is an excellent purchase for homeowners or investors alike on this ever-popular development.

Guide Price £350,000



### SERVICES:

Local Authority: Brentwood  
Council tax band: D  
Post code: CM14 5FW

### VIEWING:

Strictly by prior arrangement with Keith Ashton Estate Agents

### OPENING HOURS:

Monday to Friday: 8.45AM - 6.30PM | Saturdays: 9AM - 5.30PM | Sundays: 10AM - 2PM

### MORTGAGE INFORMATION:

We offer the additional facility of an in-house Independent Financial Adviser who will access all mortgage lenders with the purpose of providing you with the benefit of choice. For quotations or comparables please call 01277 260858 or visit our interactive website at [www.mortgagebusiness.net](http://www.mortgagebusiness.net)



WE THE AGENT HAVE NOT TESTED ANY APPARATUS, FITTINGS OR SERVICES FOR THIS PROPERTY. THE PLOT SIZE IS INTENDED MERELY AS A GUIDE AND HAS NOT BEEN OFFICIALLY MEASURED OR VERIFIED BY THE AGENT. PHOTOGRAPHS ARE FOR ILLUSTRATION ONLY AND MAY DEPICT ITEMS WHICH ARE NOT FOR SALE OR INCLUDED IN THE SALE OF THE PROPERTY.

**Brentwood**  
Tel. 01277 260858

**Village Office**  
Tel. 01277 375757

**Lettings Office**  
Tel: 01277 202200

Explore more @ [www.keithashton.co.uk](http://www.keithashton.co.uk)

